

Form 1 **REGISTRATION CARD** No. 121

1 Name in full *John Collins* (Given name) (Family name) 25

2 Home address (No.) (Street) (City)

3 Date of birth *March 1887* (Month) (Day) (Year)

4 Are you (1) a natural-born citizen, (2) a naturalized citizen, (3) an alien, (4) or have you no intention (specify which)? *Natural born*

5 Where were you born? *In Portonville Old W.S.H.* (Town) (State)

6 If not a citizen, of what country are you a citizen or subject?

7 What is your present trade, occupation, or office? *Farm laborer*

8 By whom employed? *Henry Weston* (Name) (Address) (City) (State)

9 Have you a father, mother, wife, child under 12, or a sister or brother under 12, who is dependent on you? (specify which)? *Wife child mother and*

“One of the best genealogical resources around—possibly *the best*—this is essential for most libraries.”

—*Library Journal*, February 2009

“What’s the one Web resource in a class by itself? Ancestry, of course... (it) comes the closest to realizing the dream of doing real genealogy online.”

—*Family Tree Magazine*, September 2009

# ANCESTRY® LIBRARY EDITION

THE LARGEST ONLINE GENEALOGY RESOURCE AVAILABLE

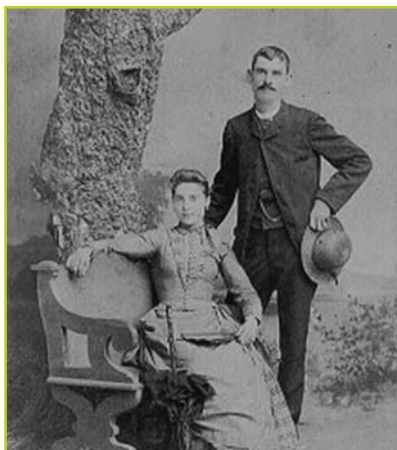
**ANCESTRY LIBRARY EDITION** provides unprecedented access to family history via documents that record the lineage of individuals from North America, the U.K., Europe, Australia, and more. Ancestry Library Edition, distributed exclusively by ProQuest and powered by Ancestry.com, brings the world’s most popular consumer online genealogy resource to your library. Answers await all your users—professional or hobbyist, expert or novice, genealogist, or historian—inside the more than 7,000 databases of family information. User-friendly search tools and comprehensive indexing make it easy to start discovering the story of you.

**Meet the family firsthand...** one-by-one with millions of unique primary sources in full-text and enhanced images—from North America, Europe, Australia, and more.

- Census records including U.S., U.K., Canada, and Germany
- Birth, marriage, and death records for U.S., Canada, and U.K.
- U.S. military records back to the 1600s
- U.S. and U.K. directories and members lists
- Immigration, emigration, passport, and naturalization records
- Court, land, tax, and probate records

**See how they lived...** maybe even face-to-face with additional collections that add context, background, and stories to individuals.

- Biographies and histories, including *American Genealogical-Biographical Index* (AGBI) and *WPA Slave Narratives*
- Collections that bring together diverse materials on communities of people, such as *Jewish Family History*
- Photos and maps, ranging from postcards and panoramas to family photos and headstones

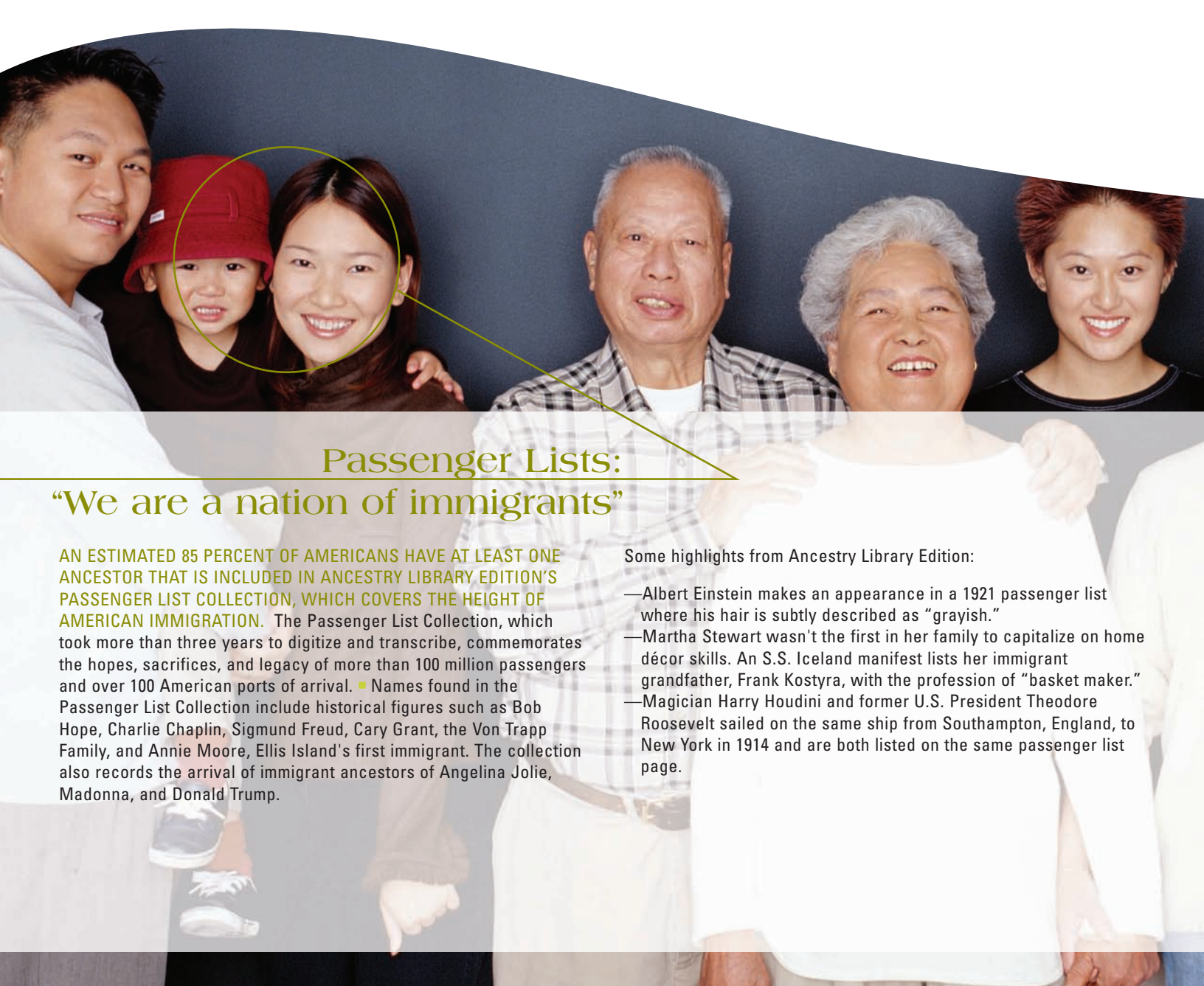


**Record your history...** and find others on the same path with helpful tools including charts, summaries, calendars, family trees, message boards, and more.

Plus, a Learning Center includes tools and resources to help users begin a family tree, learn how to use historical records, connect with other researchers, find the answers to tough research questions, and more.

69	5222	46	Burbill	Edison F.	Head	0 5222
70				Lara M.	Wife H	
71				Eric M.	Wife	
72				Matie E.	Daughter	
73				Walter E.	Daughter	
74	503	278	47	Wesley	Head	0 1825
75				Thomas W.	Wife H	
76				Margaret	Wife H	
77				Mary Louise	Daughter	
78				Wm	Daughter	
79	799	278	48	Cranson	Head	0 1722
80				R. L. L. L.	Wife H	
81				Thomas	Wife H	
82				Louella	Daughter	
83	271	280	47	Wilson	Head H	0 140
84				Margaret	Wife H	
85				Wm	Wife H	
86				Wm	Wife H	
87	378	281	47	Wm	Head	0 1222
88				Wm	Wife H	

8	William Silas SMITH	B: 1809 P: Spottsylvania County, VA M: 20 DEC 1838 P: Louisa County, VA, Minister: Robert
Peter Poindexter SMITH	B: 12 JUL 1844 P: Fluvanna, Virginia M: 2 JAN 1869 P: Fluvanna County, VA or Louisa County, VA	
9	Carthage Jane DAVIS	B: 1811 P: Princess Anne, VA D: 12 MAY 1918 P: Fluvanna County, VA
10	James Richard HARLOW	B: 1805 P: Camp Creek, Louisa County, VA M: 12 NOV 1830 P: Louisa County, VA D: 10 NOV 1875 P: Forty Creeks, Louisa County, VA
Frances Elizabeth HARLOW	B: 7 JUN 1844 P: Louisa County, VA D: 29 NOV 1914 P: Louisa County, VA	
11	Rebecca B. WHITE	B: 1812 P: Louisa County, VA D: 1875



## Passenger Lists:

### “We are a nation of immigrants”

AN ESTIMATED 85 PERCENT OF AMERICANS HAVE AT LEAST ONE ANCESTOR THAT IS INCLUDED IN ANCESTRY LIBRARY EDITION'S PASSENGER LIST COLLECTION, WHICH COVERS THE HEIGHT OF AMERICAN IMMIGRATION. The Passenger List Collection, which took more than three years to digitize and transcribe, commemorates the hopes, sacrifices, and legacy of more than 100 million passengers and over 100 American ports of arrival. ■ Names found in the Passenger List Collection include historical figures such as Bob Hope, Charlie Chaplin, Sigmund Freud, Cary Grant, the Von Trapp Family, and Annie Moore, Ellis Island's first immigrant. The collection also records the arrival of immigrant ancestors of Angelina Jolie, Madonna, and Donald Trump.

Some highlights from Ancestry Library Edition:

- Albert Einstein makes an appearance in a 1921 passenger list where his hair is subtly described as “grayish.”
- Martha Stewart wasn't the first in her family to capitalize on home décor skills. An S.S. Iceland manifest lists her immigrant grandfather, Frank Kostyra, with the profession of “basket maker.”
- Magician Harry Houdini and former U.S. President Theodore Roosevelt sailed on the same ship from Southampton, England, to New York in 1914 and are both listed on the same passenger list page.

#### MAJOR CONTENT COLLECTIONS INCLUDE:

**U.S. collections** contain hundreds of millions of records, including every-name indexed U.S. Federal Census records (1790-1930); U.S. Immigration collections, including ship lists (1820-1960), Mexican and Canadian border crossings (1890s to 1950s), and U.S. Passport Applications (1795-1925); and vital records including the widely-consulted *Social Security Death Index*.

**Canadian collections** provide nearly 60 million records, including new 1851, 1901, 1906, and 1911 Census of Canada; and vital records, such as the Drouin Collection (1621-1967), the largest and most valuable French-Canadian family history resource available.

**United Kingdom collections** including U.K. Census records for England, Wales, Isle of Man, Channel Islands, and Scotland—1841 to 1901, with nearly 200 million records; and parish vital records for England and Wales starting in the 1500s.

**German collections** including more than 8 million records from census, vital records, emigration indexes, ship lists; and phone directories (1915-1981) with millions of names for five of Germany's major cities.

**Jewish collections** developed in partnership with Jewish Gen include more than 30 individual collections covering North America, Europe, the Holocaust, and more.

**Military collections** deliver over 150 million records containing information often not found elsewhere; includes records from colonial to the Vietnam era.

**Other worldwide collections** include expanded coverage in Germany, France, Sweden, Italy, Australia, and China.